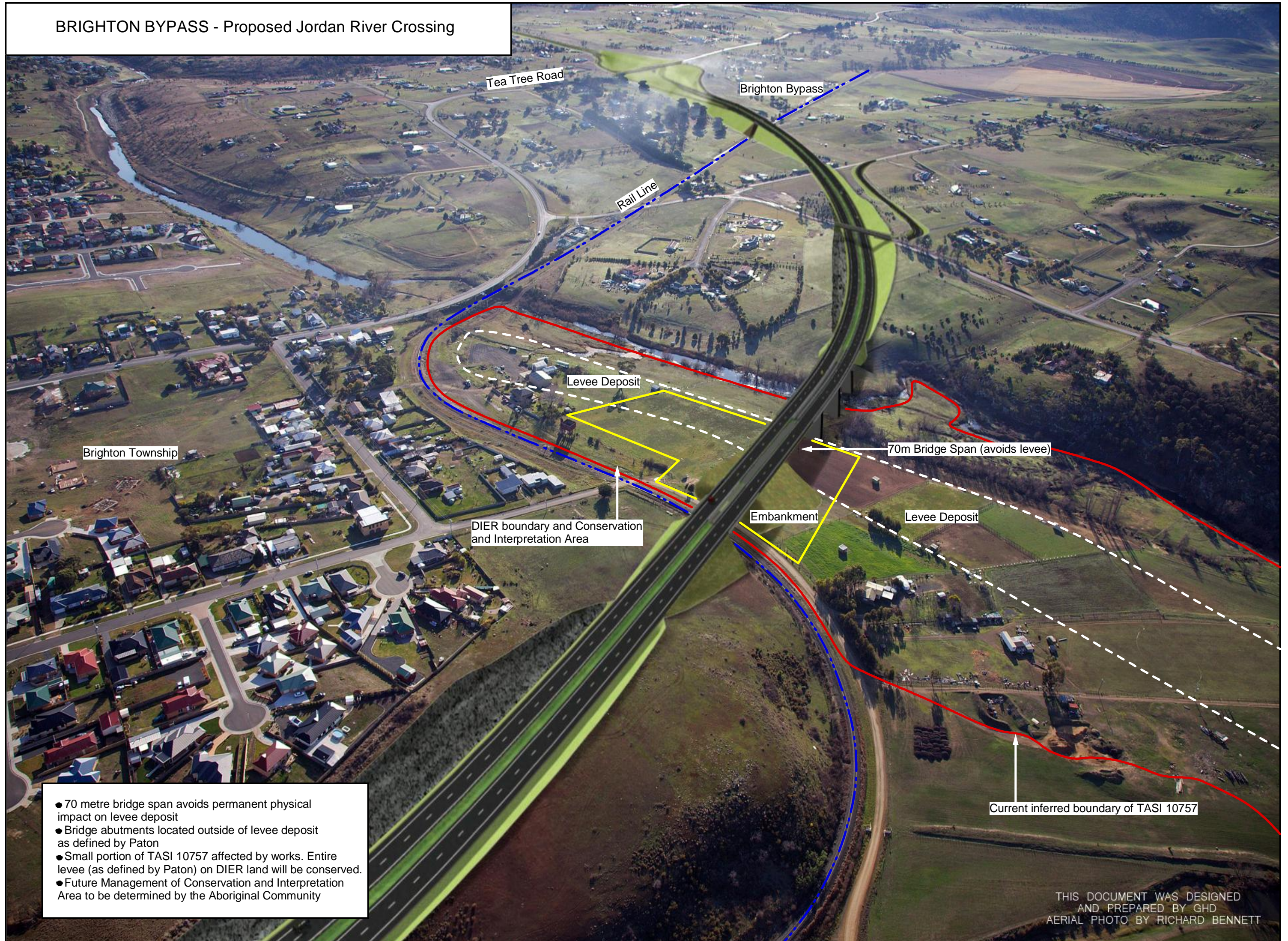


# BRIGHTON BYPASS - Proposed Jordan River Crossing



- 70 metre bridge span avoids permanent physical impact on levee deposit
- Bridge abutments located outside of levee deposit as defined by Paton
- Small portion of TASI 10757 affected by works. Entire levee (as defined by Paton) on DIER land will be conserved.
- Future Management of Conservation and Interpretation Area to be determined by the Aboriginal Community