

Code of Behaviour for Passengers and Drivers

Contract School Bus Services

MODEL CONSTITUTION

1. Name

The name of the Code of Behaviour Committee shall be “The (school name) Behaviour Committee” hereinafter referred to as the Committee.

2. Objective

The objective of the Committee shall be to have an ongoing role in:

- (a) ensuring the safe travel of students utilising regular passenger transport services to and from school; and
- (b) ensuring appropriate behaviour by both students and drivers / operators is maintained to a standard acceptable by the School and Committee.

3. Membership

The Committee shall consist of three people elected annually at the beginning of each school year. Elected members will remain as holders of office until new members are elected. The Committee shall consist of the Principal of the school or their nominee, a member of the Tasmanian Bus Association Executive for the region along with one parent of a student who utilises school bus transport.

Each person on the Committee must have a nominee in the event of not being able to attend a Committee meeting.

4. Committee Records

The Committee shall keep accurate records of decisions made at all meetings. These records may be required from time to time by the Department of Infrastructure, Energy and Resources, hereinafter referred to as DIER. If the Department does require any copies of records, the Department will contact the School Principal directly.

5. Meetings

The Committee shall meet at such times as are appropriate. The time in convening a meeting must be in accordance with the procedures for both student and driver/operator behaviour. If the Committee is not able to meet within the required time, a report detailing the reasons why must be completed. This report is to be attached to the Committee records.

6. Quorum

A quorum for any committee meeting shall be no less than three people. The Committee will be required to keep accurate records with respect to the quorum of each committee meeting.

7. Contract Issues

All contracts for the provision of school transport services are between the State of Tasmania and the individual operator.

If the local committee has an issue that affects the contract of the operator, it shall call a special Committee meeting. A motion to refer an issue to DIER shall require an affirmative vote of no less than two people. The operator shall be notified of the time and place of the meeting. An operator may attend the meeting and may address it if the operator so wishes but the operator may not vote or participate in the meeting in any way.

Subsequent to the special Committee meeting, all resolutions relating to contract issues must be forwarded to DIER with comprehensive details of the circumstances surrounding each issue.

8. Operator

The operator or any immediate family member involved in the incident shall not be eligible for membership of the committee. The operator may attend meetings of the committee at the committee's invitation.

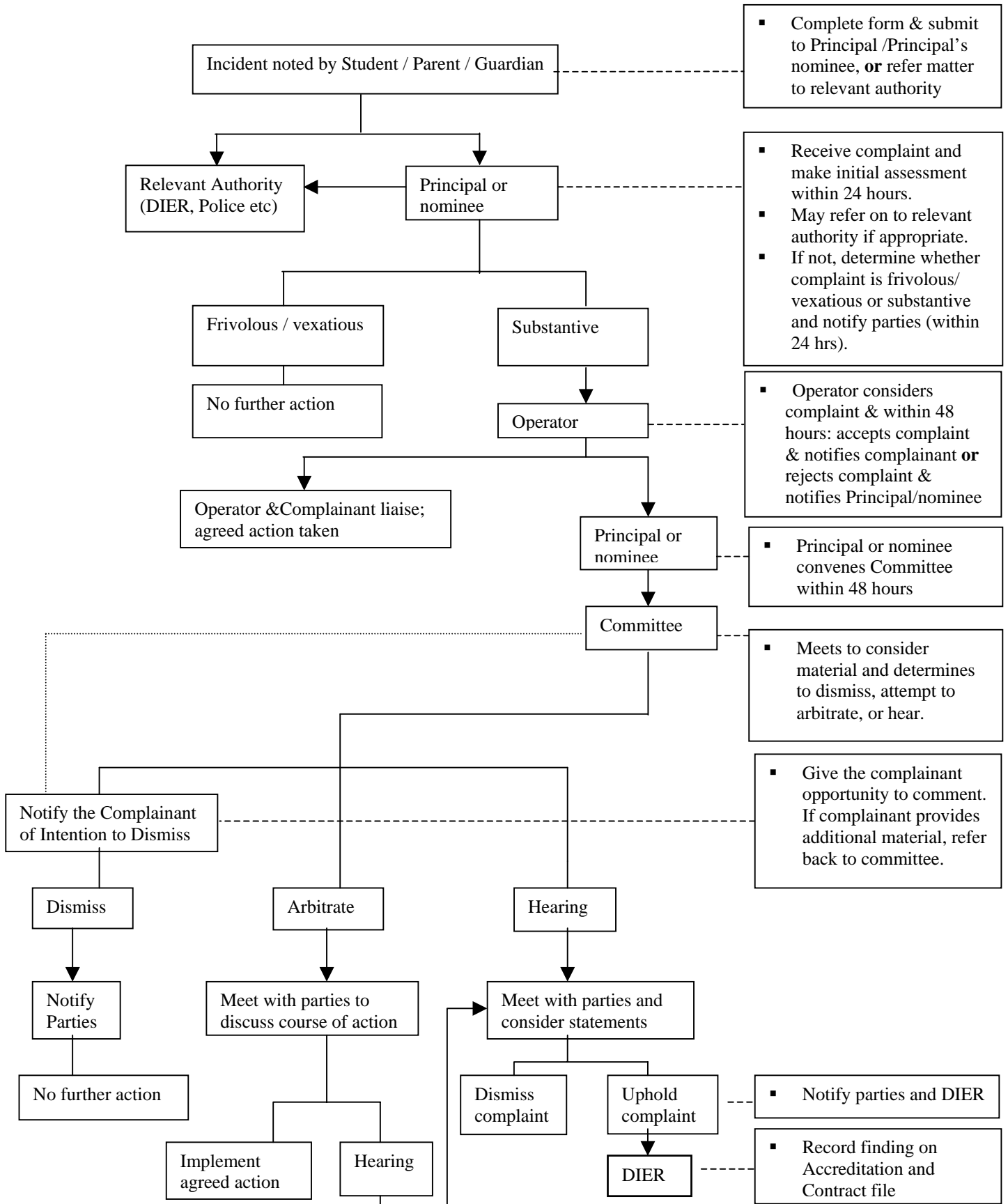
9. Dissolution

The Committee shall be dissolved when the local school transport service is discontinued.

10. Chairperson

At every meeting of the committee, the Principal, or their nominee, shall occupy the chair.

INAPPROPRIATE BEHAVIOUR BY A DRIVER



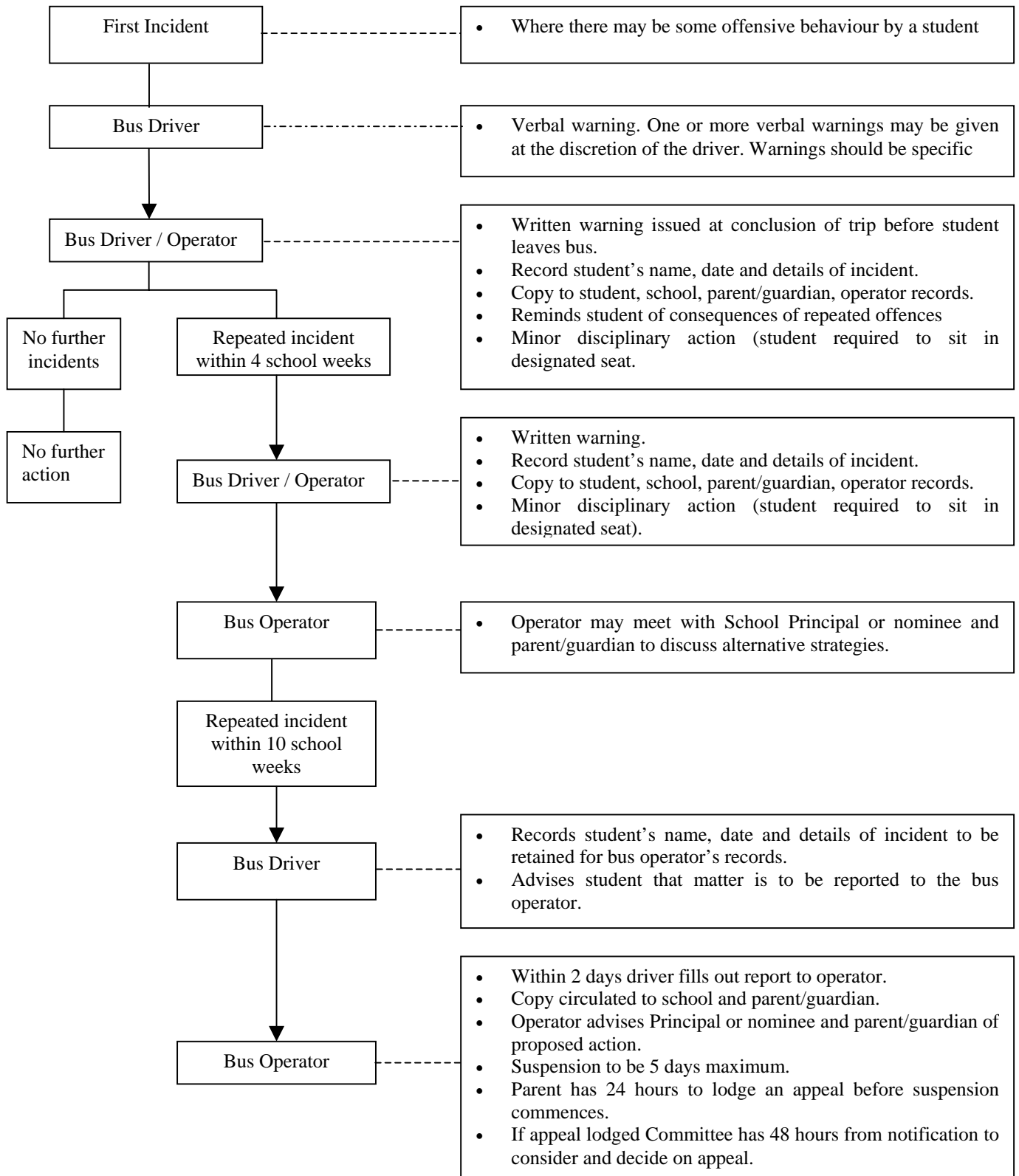
NOTE :

May include but is not restricted to inconsistent application of bus rules, bias, favouritism, lack of respect or courtesy, use of language or behaviour that may intimidate or frighten students (particularly younger students), slovenliness, lack of professionalism, poor or non-performance of service or a prosecutable offence.

CATEGORY 1

OFFENSIVE BEHAVIOUR BY A STUDENT

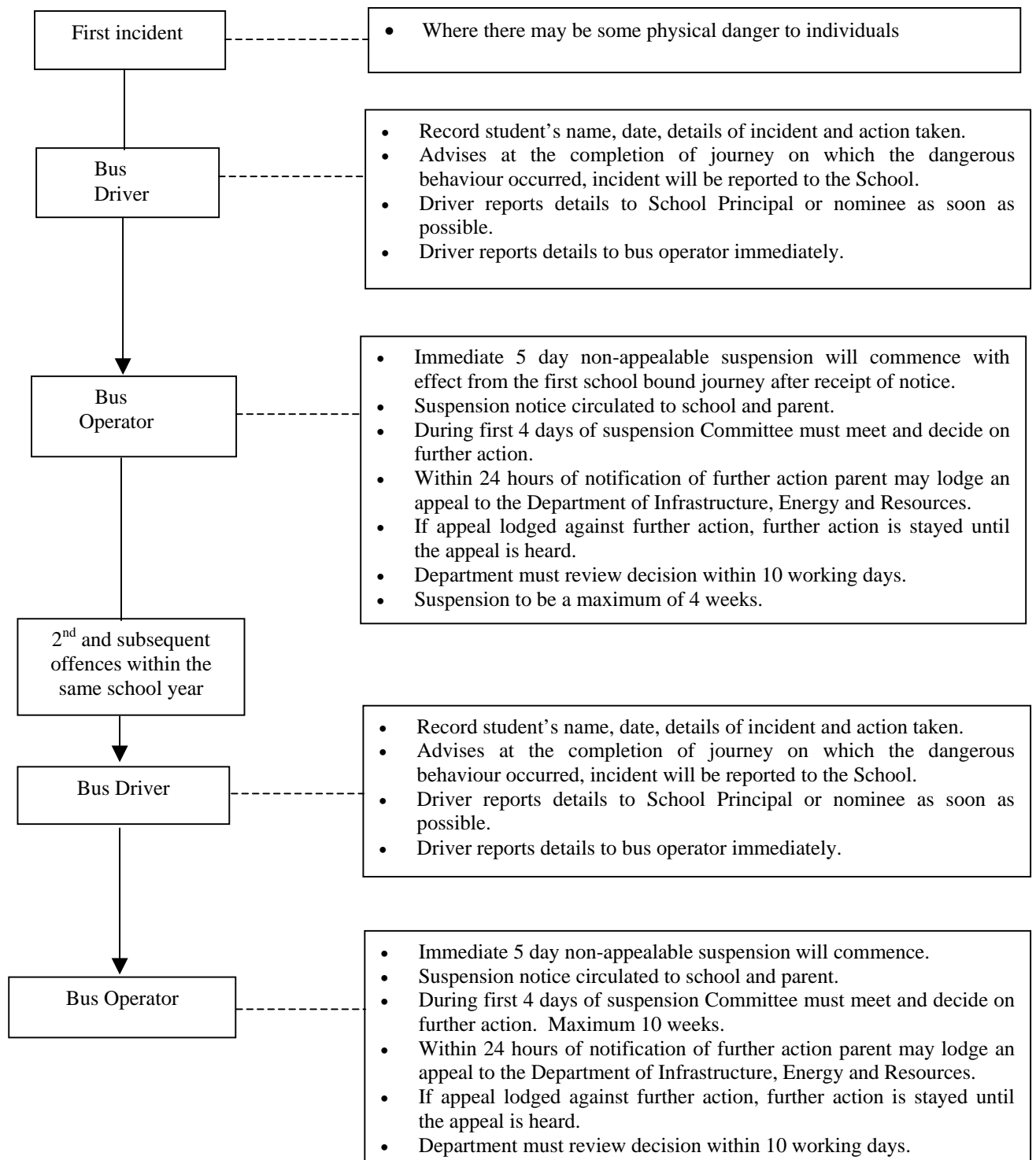
Involves distracting the driver, annoying or irritating other passengers, littering or otherwise increasing the task of cleaning the interior of the vehicle, or otherwise reducing the amenity of the trip. This includes issues of teasing, verbal bullying, victimisation, inappropriate language, courtesy and politeness, refusal to obey an instruction, or failure to observe any vehicle specific rules (such as occupancy of specific seats) as may be included in site specific locally defined codes of behaviour



CATEGORY 2

DANGEROUS AND/OR DESTRUCTIVE BEHAVIOUR BY A STUDENT

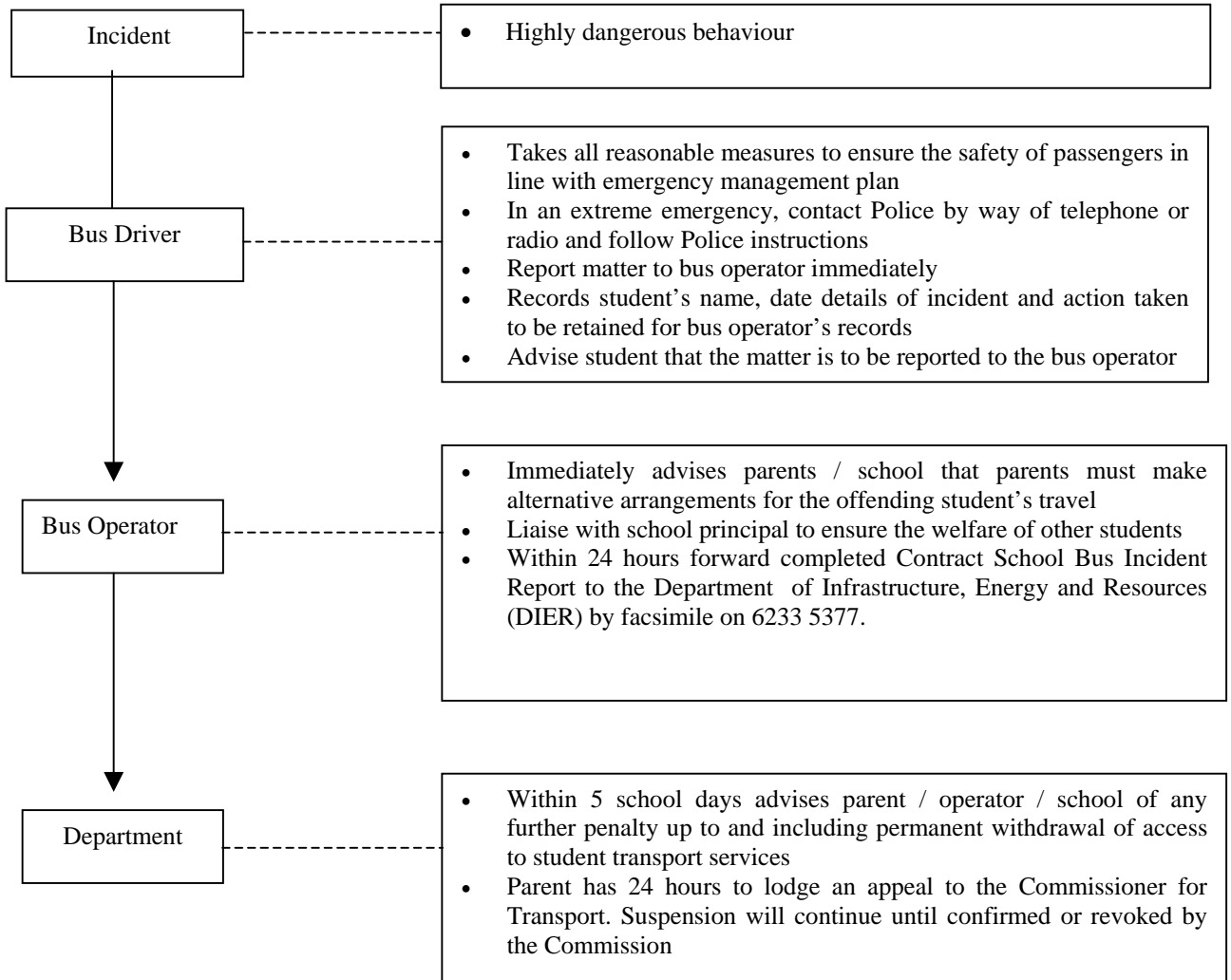
Involves direct risk of injury or the destruction of property. This includes issues of fighting or wrestling, physical bullying or harassment, pushing or shoving while boarding or exiting the bus, throwing objects inside or from the vehicle, obstructing doors, aisles or emergency exits, extending any part of the body from the vehicle while it is in motion, vandalising or damaging any part of the vehicle or the property of other passengers or failure to observe any vehicle specific rules (such as misuse of emergency window tools) as may be included in site specific locally defined codes of behaviour



CATEGORY 3

LIFE THREATENING BEHAVIOUR BY A STUDENT

Involves actual injury or direct risk of loss of life. This includes pushing another student through a door or window while the vehicle is in motion, interfering with the driving controls or emergency door release, assaulting the driver while the vehicle is in motion, or recklessly or negligently endangering themselves or others



Note : Where a student has been permanently refused travel on a bus and there is a subsequent change in behavioural circumstances the parent may request that the decision be reviewed by the Department, in consultation with the operator. The Department may uphold the original decision or may impose special conditions on the student's return to travel on the bus.