

**solo driver**  
**SAFER DRIVER**

# L1 LOGBOOK

[www.transport.tas.gov.au](http://www.transport.tas.gov.au)





This logbook is owned and maintained by the Department of State Growth. Any requests to reproduce information contained in it must be made in writing to the Registrar of Motor Vehicles c/- the Department of State Growth.

This logbook is produced by the Department as a guide for people learning to drive.

While every effort has been made to ensure that the information is accurate and conforms to Tasmanian legislation, this book must not be construed as a legal interpretation of legislation.

From time to time the Department may provide more up to date information on the internet that may differ from the information presented in this publication.

All enquiries about this logbook should be directed to:

1300 13 55 13 or

The Department of State Growth

GPO Box 1002 Hobart Tasmania 7001

## THIS BOOK INCLUDES A VOLUNTARY LOGBOOK FOR L1 LEARNERS.

### THIS LOGBOOK BELONGS TO:

**NAME:**

**LEARNER LICENCE NO:**

### CONTACT DETAILS:

**Address:**

**Phone:**

If found, this book should be returned to the person above or to the Registrar of Motor Vehicles, GPO Box 1002, Hobart, Tasmania, 7001.

# CONTENTS

<b>INTRODUCTION</b>	<b>3</b>
The learner period	3
L1 licence	5
L2 practical driving assessment (L2 PDA)	5
L2 licence	5
PI practical driving assessment (PI PDA)	5
<b>LEARNING TO DRIVE</b>	<b>6</b>
Choosing your supervisory driver(s)	6
Choosing your car	6
For the supervisor	6
What to do for your learner	6
Car checks	7
Driving position	7
Driving a manual car	7
Driving an automatic car	7
<b>LEARNING TO DRIVE IN THE L1 LICENCE STAGE</b>	<b>8</b>
What you have to do	8
L1 driving skills	8
How to develop these skills	8
Car control skills	9
Manoeuvres	9
When will I be ready to move to L2?	10

<b>THE L2 PRACTICAL DRIVING ASSESSMENT</b>	<b>11</b>
About the L2 PDA	12
L2 practice driving assessment	12
How does the Driving Assessor judge?	13
Assessment items	14
<b>USING THE VOLUNTARY LOGBOOK</b>	<b>16</b>
Choosing your driving conditions	16
<b>HOW TO USE THE LOGBOOK</b>	<b>17</b>
<b>COMMONLY ASKED QUESTIONS</b>	<b>18</b>
<b>TRACKING YOUR DRIVING TIME</b>	<b>19</b>
<b>LOGBOOK</b>	<b>20</b>
<b>USEFUL INFORMATION</b>	<b>26</b>
Publications and links	26
Booking your driving assessment	26
What to bring to your driving assessment	26
Suitable car checklist	27
Driving schools guide	28



## INTRODUCTION

**Congratulations!!** You've got your car L1 learner licence. Now you can start to learn to drive.

It will take a lot longer than you think. Don't rush – you've got a 3-year licence and plenty of time to get your L2 licence.

Learning to drive is a life-long process. Even once you get your provisional licence and start driving on your own, you'll continue learning.

### The learner period

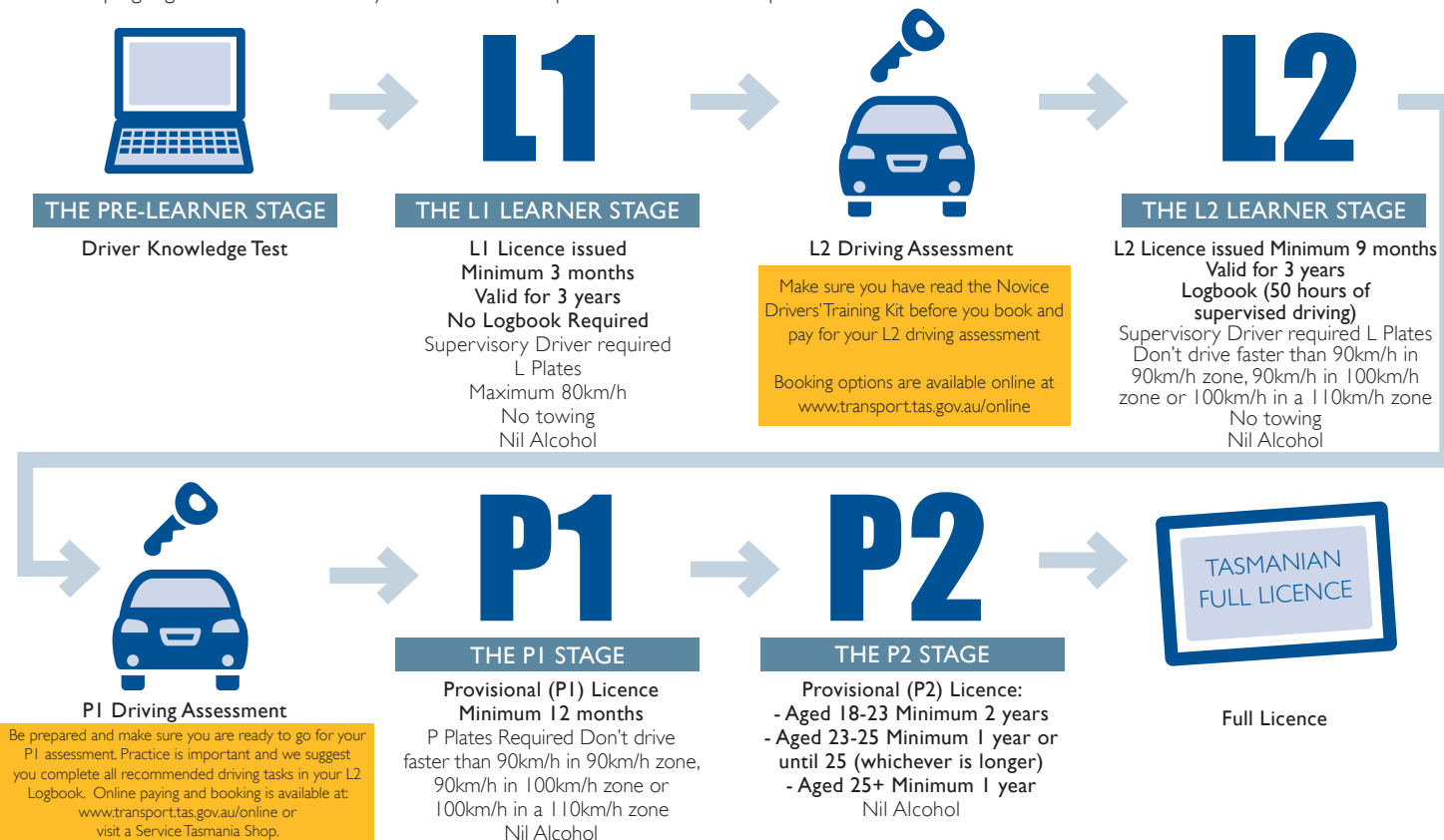
You need to get as much **driving experience** and **practice** as possible before you get your provisional licence. This will make you a safer driver.

By getting experience and practice, you'll learn:

- » how to use the car's controls (like brakes & steering) and controlling its movement
- » how to use the car's controls without thinking about them
- » higher order driving skills (decision making, scanning and hazard perception)
- » to start noticing and fixing your mistakes.

In the old system, learning to drive only looked at car control skills. This meant that when you got your provisional licence you hadn't started to develop the important higher order driving skills. Road safety experts believe that if you don't have any of these higher order skills, you're more likely to crash.

To help you get extra driving experience and practice we've split the learner period into two parts, L1 and L2. You need to show us that you have learnt car control skills (and that they have become automatic) by passing the L2 Practical Driving Assessment (L2 PDA), so you can go on to start developing higher order skills while you're still under supervision. The learner period looks like this:



## L1 Licence

During L1 you'll learn:

- » how to use the car's controls (such as brakes, steering wheel and gears) and control its movement
- » how to use the car's controls without thinking about them
- » early higher order driving skills (decision making, scanning and hazard perception).

You won't have to do a minimum number of hours but it is highly recommended that you do 30 hours or more to obtain the skills needed to pass the L2 PDA. It's up to you and your supervisory driver to determine when you're ready to go for your L2 PDA. But only take it when you're ready or you'll have to pay again.

This L1 logbook sets out:

- » some things you need to know as an L1 learner
- » how to practice for your L2 PDA
- » a voluntary logbook so you can keep track of your driving.

## L2 Practical Driving Assessment (L2 PDA)

To move to L2 you must pass the L2 PDA. It takes a lot of practice and experience to pass the L2 PDA so don't rush. The L2 PDA looks at how well you use the car's controls, and if your car control skills have become automatic (you can use your car controls without thinking about them). Passing this assessment shows that you have spare attention to spend on developing higher order driving skills which you will need to pass the P1 Practical Driving Assessment (P1 PDA).

See page 11 for more information on the L2 PDA.

## L2 Licence

During L2 you'll:

- » continue to develop higher order skills
- » identify and respond to hazards
- » make decisions on your own
- » start noticing and fixing your mistakes.

So that you start developing these skills while you're a learner, you must complete the compulsory L2 logbook and hold your licence at L2 for at least 9 continuous months. To complete the logbook you must do at least 50 hours on-road supervised driving and complete the 8 recommended driving tasks. After this time you may have gained sufficient higher order driving skills to go for your P1 PDA.

To find out more about L2, go to the back of this book, which sets out:

- » things you need to know as an L2 learner
- » how to practice for your P1 PDA so you can move to the P1 licence stage of your provisional licence
- » the compulsory L2 logbook.

## P1 Practical Driving Assessment (P1 PDA)

To get your Provisional P1 licence you must pass the P1 PDA.

The P1 PDA looks at how automatic your car control skills are and how much spare attention you have.

It also looks at your driving decisions and how well you recognise and respond to hazards. There's more information on the P1 PDA in the L2 logbook.

# LEARNING TO DRIVE

## Choosing your supervisory driver(s)

When you're learning to drive, you must have a supervisory driver sitting next to you.

They can be a parent, relative or friend. You might also want to get lessons from a driving instructor.

Your supervisory driver **must** have:

- » a current full Australian car (not a learner, provisional, overseas or restricted) licence
- » had no suspensions or licence disqualifications in the past 2 years
- » a blood alcohol content of less than .05 when supervising you.

Your supervisory driver should:

- » be someone you feel comfortable with
- » have a good driving record
- » help you learn to drive safely
- » have a good knowledge of the road rules.

Choosing your car

When you start learning to drive, you'll need to choose whether you want to get your automatic or manual car licence. If you use an automatic vehicle when you pass the P1 PDA you can only drive automatic cars. If you get a manual licence you can drive automatic or manual cars. You can take the L2 PDA in an automatic vehicle and be able to drive a manual, under supervision on your L2 licence.

## For the supervisor

You're preparing your learner for a lifetime of driving.

You have an important role in helping them get as much experience as possible.

To help you teach your learner, use the Supervisory Drivers' Handbook included in this Novice Drivers' Training Kit, or download it at [www.transport.tas.gov.au/licensing/publications](http://www.transport.tas.gov.au/licensing/publications)

## What to do for your learner

- » Be patient and don't lose your temper
- » Show and tell them how to do a task or manoeuvre
- » Give them feedback on what they do well and where they need to improve – but try to remain positive about their driving
- » When your learner is ready, encourage them to drive in different conditions and situations
- » Make sure they get as much supervised driving experience as possible.



## Car checks

### Before you drive a car, you need to check:

- » that it's registered and roadworthy (eg. the tyres aren't bald, the horn, lights, brakes and brake lights, steering wheel and windscreen wipers are in working order)
- » its basic maintenance (such as petrol levels, there are no oil or fluid leaks, the windscreen is clear, oil and water are at the correct levels and there's enough air pressure in the tyres)
- » you and all your passengers have seatbelts on
- » that things like your seat, mirrors and steering wheel are all properly adjusted
- » around the outside of the car for any dangers (like broken glass)
- » the direction of the wheels to see which way the car will move
- » that there are no small children or animals near the car
- » that all reverse lights are working.

The Suitable Car Checklist on page 27 has more information on car checks.

## Driving position

You should sit in the driver's seat so that your:

- » legs are apart and knees are slightly bent
- » feet can reach the pedals (clutch, brake and accelerator)
- » back is resting on the seat's back rest
- » arms have a slight bend in them when holding the wheel.

## Driving a manual car

- › Drive around corners in a gear that helps you control the car - don't have the clutch in
- › Keep your foot off the clutch unless you're changing gears or stopping the car from stalling
- › Use the correct gear - don't over-rev or strain the engine.

## Driving an automatic car

- › When stopped, keep your foot on the brake when changing gears
- › If you use the gear stick when driving, choose gears that won't strain the engine
- › Use your right foot to brake.

# LEARNING TO DRIVE IN THE L1 LICENCE STAGE

## What you have to do

You must:

- » display L-plates so that they are clearly visible from the front and back of the car you are driving
- » carry your learner licence when driving
- » be supervised by a full car licence holder who has:
  - » a current full Australian car driver's licence (not a learner, provisional, overseas or restricted)
  - » no periods of licence suspension or disqualification in the previous 2 years
  - » a blood alcohol content of less than .05
- » have a zero blood alcohol content
- » **not** tow another vehicle (including a trailer)
- » **not** go faster than 80 km/h, even when a higher speed limit applies.

## L1 driving skills

During L1 you'll learn:

- » car control skills (such as braking, steering, changing gears, using the indicators and other switches like the windscreen wipers and headlights)
- » how to use the car's controls without thinking about them, so they become "automatic".

These are the basic driving skills that you need to start learning how to drive safely.

## How to develop these skills

To learn how to use your car's controls, you'll need to be shown how and when to use them. Then you need to practice in quiet streets.

As you get more experience, you'll need to practice in busier streets.

The first step is getting familiar with being in a car. Before learning to drive sit in the driver's seat with the engine off and:

- » get used to the feel of sitting in the driver's seat
- » adjust the car mirrors so you have a clear view of the rear and sides of the car
- » find and apply the handbrake, foot brake, accelerator and gear stick
- » use all the switches and controls (indicators, lights, windscreen wipers) so you're familiar with where they are and what they do
- » if you're learning in a manual you should also apply the clutch and change the car through the gears (including reverse).

When you feel comfortable sitting in the driver's seat, learn how to:

- » start and stop the engine
- » steer the car
- » move the car forwards and backwards
- » drive the car and stop at a certain point.

When you first start out, you'll be busy controlling the car and won't always see what's happening around you. Your supervisory driver needs to help you scan on and around the road for hazards (like pedestrians, cars or motorcyclists pulling out).

You learn to drive by driving – there is no substitute for driving experience.

When you first start learning to drive:

- » choose quiet, wide streets and good weather conditions
- » start with short driving sessions and gradually increase their length
- » ask your supervisory driver to demonstrate tasks before trying them yourself
- » listen to any feedback your supervisory driver gives you.

As you become more comfortable driving a car:

- » start to increase the length of your driving sessions
- » drive in different areas with more traffic.

## Car control skills

As you get more practice, you'll start to drive without thinking about when and where you need to operate your car controls.

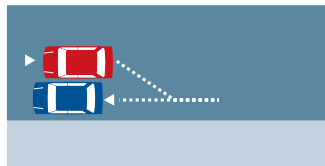
To develop your car control skills so that they become automatic, you should:

- » practice driving in different weather and traffic conditions (light or heavy traffic, wet weather)
- » practice manoeuvres like 3 point turns, U-turns, parking and reversing.

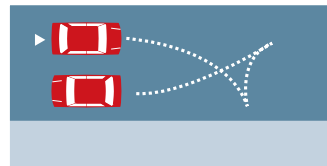
Regularly change the places where you drive. Doing the same things over and over again in the same locations becomes boring.

## Manoeuvres

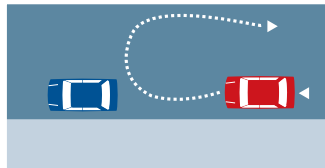
Practising manoeuvres will help your car control skills become automatic.



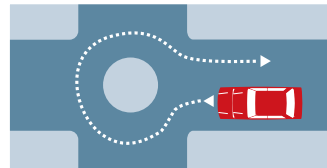
Reverse parallel park



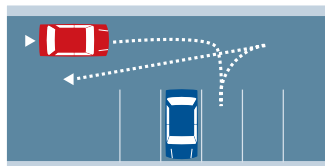
Three-point turn



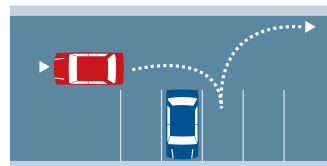
U-turn



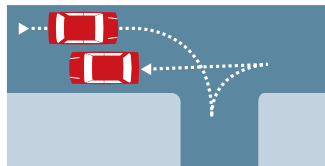
U-turn at a roundabout



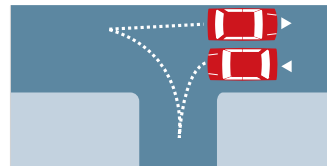
Do a forward angle park and reverse out



Do a reverse angle park, then drive out



Drive forward into a driveway on the right, then reverse and change direction.



Drive forward into a driveway on the left, then reverse out to change direction.

## When will I be ready to move to L2?

The most important clue is whether your car control skills are automatic and you have spare attention. If you're ready to go for your L2 PDA, you:

- » can use more than one car control at once (like using the accelerator; steering wheel, clutch and gear stick at the same time)
- » can make the car go in the direction and at the speed that you want it to go
- » drive smoothly when doing manoeuvres, and when driving around bends, on hills, at intersections, when merging and when changing lanes
- » obey all road rules when driving
- » have started making driving decisions (this shows that you've started to think in advance)
- » are thinking about where you want to drive next
- » use clues like information signs, landmarks, and road signs/markings to help you work out where you need to drive
- » can change your driving route to get back on-course if you find that you've turned into the wrong street
- » watch other road users (including pedestrians, cyclists and other drivers) when driving
- » can pick gaps in traffic when turning or changing lanes
- » adjust your speed to match the road, weather and traffic conditions.

Try doing some practice assessments with your supervisor (see page 12). They will help you prepare for your assessment. If you do plenty of practice assessments, you'll feel more comfortable during your real L2 PDA. Units 1, 2 and 3 of the Driver Competency Standard (available at [www.transport.tas.gov.au/licensing/getting-a-licence/assessments](http://www.transport.tas.gov.au/licensing/getting-a-licence/assessments)) are also a good way to check your progress in learning to drive.



## THE L2 PRACTICAL DRIVING ASSESSMENT

To move from L1 to L2 you need to pass the L2 PDA. You can take the assessment once you have completed 3 continuous months on your L2 licence and it is recommended that you do at least 30 hours supervised driving. But only take it when you're ready or you'll have to pay again.

The L2 PDA marks you on your car control skills and how well they've become automated.

Experience counts and it shows – get as much driving experience under supervision as you can to help you pass your driving assessment.

It looks at:

Assessment Item	What is it?
Flow	How you combine driving skills together (like smoothly joining each driving task in a manoeuvre together)
Movement	How smoothly you drive the car backwards and forwards and manage the car's speed
Path	How you keep the car in its lane and choose the best road position for doing manoeuvres
Look	How well you monitor the traffic conditions around you, including checking mirrors and blind spots
Signal	How you signal your intention to turn or change lanes (includes keeping the car's indicators "on" until the turn is completed)
Vehicle management	How you manage important driving tasks (like responding to the car's instruments and using car controls as needed)

## About the L2 PDA

At the L2 PDA you'll have to:

1. **identify common cabin features** – such as hazard lights, handbrake, demister (front and back), headlights, wipers and indicators
2. **follow directions** – drive where your Driving Assessor tells you.

**EXAMPLE:** your Driving Assessor may say “at the next set of traffic lights, turn left”.

3. **do a driving manoeuvre** – your Driving Assessor will tell you when and where you will have to do the 3 point turn manoeuvre.

The driving assessment is split into four sections and looks like this:



## L2 Practice Driving Assessment

Doing lots of practice driving assessments will help you pass the L2 PDA. Ask your supervisor to design a practice driving assessment, made up of a 3 point turn exercise and 3 'follow directions' sections. The whole practice assessment should take about 25 minutes on road.

### To practice following directions:

- » Ask your supervisor to plan an assessment route for you to drive, making sure that it includes things like traffic lights, traffic signs, intersections and roundabouts
- » When you're ready to begin the practice assessment, your supervisor should tell you where they want you to drive
- » When you've driven for about 5 minutes, your supervisor should ask you to pull over and tell you that your 'follow directions' section has finished. Ask your supervisory driver to give you feedback on your driving before you prepare for the next section.

### To practice driving manoeuvres:

- » Ask your supervisor to include a 3 point turn manoeuvre as an exercise
- » Your supervisor can use the assessment items (page 14-15) to see how you went on the practice assessment and mark the practice assessment form.

L2 PRACTICE ASSESSMENT FORM		L	S	F	M	P	VM
Section 1	Follow Directions to Section 2	<input type="checkbox"/>	<input type="checkbox"/>	<input type="checkbox"/>	<input type="checkbox"/>	<input type="checkbox"/>	<input type="checkbox"/>
Section 2	Follow Directions to Exercise in Section 3	<input type="checkbox"/>	<input type="checkbox"/>	<input type="checkbox"/>	<input type="checkbox"/>	<input type="checkbox"/>	<input type="checkbox"/>
Section 3	Manoeuvre (3 point turn)	<input type="checkbox"/>	<input type="checkbox"/>	<input type="checkbox"/>	<input type="checkbox"/>	<input type="checkbox"/>	<input type="checkbox"/>
Section 4	Follow Directions back to your starting point	<input type="checkbox"/>	<input type="checkbox"/>	<input type="checkbox"/>	<input type="checkbox"/>	<input type="checkbox"/>	<input type="checkbox"/>

L = Look

S = Signal

F = Flow

M = Movement

P = Path

VM = Vehicle Management

### How does the Driving Assessor judge?

By using the assessment items on page 14 and 15, your Driving Assessor will look at how well you drive your car and:

- » put the road rules into practice
- » fit in with other traffic in low density traffic environments
- » do a manoeuvre - 3 point turn
- » follow directions.

It is important to remember that your supervisory driver is not a trained Driving Assessor so your practice assessment may not be exactly the same as your actual assessment

We want you to be prepared – go for your driving assessment when you're sure that you're ready.

## Assessment items

### Flow

To meet the standard on flow, you must:

- › Start the vehicle and move off without delay
- › Prepare for a manoeuvre by monitoring traffic and obeying road markings and road signs
- › Select an appropriate location and gap in traffic to perform a manoeuvre
- › Start each manoeuvre promptly
- › Join parts of the manoeuvre together and link manoeuvres together smoothly
- › Fit in with traffic flow, including driving at a speed that would allow other traffic to travel at a safe and reasonable speed
- › Stop and remain stopped until it's time to proceed.  
If there is a gap safe for a manoeuvre, you maintain a continuous flow and don't come to a stop unnecessarily
- › Obey the road rules
- › Drive without assistance where appropriate.

### Path

To meet the standard on path, you must:

- › Choose the best path on the road and maintain it during manoeuvres, turns and curves

- › Respond quickly to deviations from the ideal path
- › Adjust the path to suit the situation
- › Approach parking and U-turn manoeuvres in a way that allows them to be completed smoothly and finish in the correct position (PI only)
- › Select the most suitable location to perform a manoeuvre, where it makes sensible use of space and minimises the delay to other road users and the time spent on the wrong side of the road
- › Use the most travelled section of the road, including driving in the centre of marked lanes
- › Maintain a legal path.

### Look

To meet the standard on look, you must:

- › Look in the appropriate direction before moving off, turning or diverging and any other situation that requires it
- › Look in appropriate direction again if there has been a significant pause since previous look
- › Ensure your head and eye movements match the situation and allow you time to respond safely to your environment



- › Check mirrors often enough to remain aware of following traffic
- › Check mirrors before braking
- › Look at appropriate mirror(s) before moving off, turning or diverging and any other situation that requires it.

## Signal

To meet the standard on signal, you must:

- › Use the correct indicator for an appropriate duration before moving off, turning or diverging
- › Ensure indicator is turned off after manoeuvre is completed
- › Reapply the indicator if it self-cancels before a manoeuvre is completed.

## Movement

To meet the standard on movement, you must:

- › Make sure each car movement is in the right direction, and the car doesn't move more than 30cm in the wrong direction
- › Drive the car so that it starts moving or changes speed smoothly

- › Brake so that the car comes to a smooth stop
- › Brake mainly in a straight line and vary brake pressure according to the road surface
- › Travel within the speed limit, but not too quickly or unreasonably slowly for the conditions
- › Maintain an appropriate following distance
- › Stop accurately, safely, legally and remain stopped as required.

## Vehicle management

To meet the standard on vehicle management, you must:

- › Ensure the cabin and occupants are safe
- › Adjust the mirrors for the best view of traffic
- › Adopt and maintain an effective driving posture
- › Respond to appropriate warning lights
- › Use required controls, switches and pedals correctly
- › Steer and use gears in a way that demonstrates effective control.

## USING THE VOLUNTARY LOGBOOK

Filling in a logbook when you start learning to drive can help you learn. Learning to drive is a challenge – it's a lot of hard work and practice. Your logbook will show you how far you've come in your driving.

Keeping a logbook:

- » is a great way to monitor your driving progress – how many hours you've driven and how often you go driving
- » helps you keep track of the different driving conditions you've experienced
- » makes it easy for the different people who might supervise you to see how much driving experience you've had.

### Choosing your driving conditions

When using the logbook you may choose to record your driving experience in different conditions. This means you can keep track of the type of conditions you've driven in.

Start your driving practice on quiet residential streets, and as your driving gets better, try driving in a wider range of conditions. You could try driving in different:

- » light conditions (day, night, dawn or dusk)
- » types of roads (eg highways, gravel roads)
- » weather conditions (eg rainy, fog)
- » traffic conditions (light or heavy).

Only try driving in these conditions when you're comfortable controlling your car. Try one new condition at a time, so you have time to become familiar with each new situation.



# HOW TO USE THE LOGBOOK

## STEP 1

In each row, fill in:

- » the date
- » how many minutes you drove for
- » where you started driving and where you finished
- » the type of road, visibility, road and traffic conditions you experienced.

## STEP 2

When you've completed a page, add up the number of minutes that you drove and put this number in the shaded box at the bottom of each page.

## STEP 3

Keep track of your driving by filling out the table on page 19. Put the number of minutes that you drove from each page in column A. You can keep a running total of your driving time by filling out column B.

For example, if you drove for 360 minutes on the first page, and 180 minutes on the second page, you would put 540 minutes in column B. It's recommended that you get at least 30 hours driving experience, in the L1 stage, which is 1800 minutes.

## STEP 4

You can take the driving assessment at any time during L1, as long as you've completed the minimum 3 months and had enough driving practice.

## COMMONLY ASKED QUESTIONS

QUESTION	ANSWER
What is driving?	When filling out your logbook, driving is any time when you're in the driving seat and your car is moving. Driving also includes being stationary at intersections or in a line of traffic. Driving doesn't include being in the driver's seat of a parked vehicle.
Can I have more than one supervisory driver complete my logbook?	Yes. Each time you drive you can have the same or a different supervisory driver.
Is there a legal limit to how long I can drive for?	There is no legal limit, but try not to make your trips too long. If you drive for more than 2 hours, you need to have a 15-minute break. Breaks can't count as driving time. If you get tired, ask your supervisory driver to take over the driving.
If I pass my L2 PDA, can I keep my logbook?	After you pass your L2 PDA, you must keep your logbook so you can fill in the compulsory L2 logbook.
Can I use driving time in my L1 logbook towards my 50 hours for my P1 PDA?	No, only driving done in L2 can count towards your compulsory 50 hours.

# TRACKING YOUR DRIVING TIME

PAGE	A MINUTES	B TOTAL
TOTAL LOGGED MINUTES		

It is recommended that you get at least 30 hours experience during L1 before taking the driving assessment.

1800 MINUTES = 30 HOURS

LOGBOOK

LOCATION				DRIVING EXPERIENCE			
Date	Minutes	From	To	Visibility	Road Conditions	Traffic Conditions	Type of Road
13.01.15	20	Hobart	Kingston	D	W	M	M, C, H, S
13.01.15	30	Kingston	New Town	D	W	L	M, C, H, S
		NOTE: hours logged during L1 will not count towards the compulsory 50 hours that must be logged in L2.					

LOCATION				DRIVING EXPERIENCE			
Date	Minutes	From	To	Visibility	Road Condition	Traffic Conditions	Type of Road

#### Visibility

**D** day  
**N** night  
**F** fog  
**S** dawn or dusk

#### Road conditions

**D** dry  
**W** wet  
**I** icy  
**S** snow

#### Traffic conditions

**H** heavy  
**L** light  
**M** medium

#### Type of road

**S** residential street  
**M** main road  
**C** inner city  
**H** highway  
**R** rural road  
**G** gravel

[illegible]









## BOOKING YOUR DRIVING ASSESSMENT

You can undertake your L2 driving assessment with a Government Driving Assessor or an Authorised Driving Assessor:

### **Authorised Driving Assessor:**

Contact an Authorised Driving Assessor. All Authorised Driving Assessors are listed on the Transport website - List of Authorised Driving Assessors (available at [www.transport.tas.gov.au](http://www.transport.tas.gov.au))

You book and pay for your L2 PDA with the Authorised Driving Assessor.

### **Government Driving Assessor (GDA)**

Book and Pay online at [www.transport.tas.gov.au/online](http://www.transport.tas.gov.au/online) or visit a Service Tasmania shop. You will need to pay the L2 driving assessment fee and provide your licence.

Driving Assessments are conducted at or near Service Tasmania shops (excluding Bridgewater & Kingston) and some Police stations (King and Flinders Island only).

You can do your assessment at:

- » Hobart
- » Launceston
- » Burnie
- » Devonport.

**Special rules based on where you live, apply to all other assessment locations around Tasmania.**

## **What to bring to your driving assessment**

- » Your learner licence
- » A suitable car (see page 27 for the suitable car checklist)
- » Your driving assessment confirmation sheet and receipt, if undertaking the assessment with a GDA. (You receive this sheet when you book your assessment.)
- » Your supervisory driver.

## USEFUL INFORMATION

### **Publications and links**

- » **Tasmanian Road Rules Book** – has easy-to-read information on the road rules, road safety, licensing and registration. You can buy it at Service Tasmania shops for a fee or download for free.
- » **[www.transport.tas.gov.au](http://www.transport.tas.gov.au):**
- » Tasmanian Road Rules Book
- » Supervisory Driver's Handbook
- » L1 and L2 book
- » Driver Competency Standard (the basis for the L2 & P1 PDA's)
- » How to pass your assessments
- » Other information on getting a licence
- » Licence and assessment fees
- » Practice DKTS
- » List of the Driver Knowledge Test questions

## Suitable car checklist

- › current registration
- › a working handbrake that is located between the front seats and can be easily applied by the Driving Assessor
- › the right type of vehicle for your assessment, if you use an automatic vehicle for your L2 PDA you will not be restricted to an automatic vehicle in the L2 Stage.
- › car is reasonably clean and tidy
- › a clean windscreen that is not cracked or obscured
- › front doors and windows that open and shut properly, from the inside and outside
- › working indicators
- › have a working speedometer and speed displayed on the dashboard
- › working horn
- › working brake lights
- › working headlights
- › working windscreen wipers and demisters
- › tyres that aren't flat, with a tread depth of at least 1.5 mm over the whole tyre surface
- › seatbelts that meet the Australian standard and are in good working order
- › front seats that are securely fixed
- › working side and rear view mirrors
- › working brakes
- › working reverse lights.
- › adequate supply of fuel for the assessment, no fuel warning light displayed on dashboard.

## Driving schools guide

Check the yellow pages or [www.yellowpages.com.au](http://www.yellowpages.com.au) for Driving Instructor details in your area. Authorised Driving Instructors can undertake L2 assessments across Tasmania. A list of Authorised Driving Instructors is available at [www.transport.tas.gov.au/licensing/getting-a-licence/assessments/assessments](http://www.transport.tas.gov.au/licensing/getting-a-licence/assessments/assessments)

# Australian Driver Trainers Association (TAS) Inc

- Professional driving tuition
- Low cost, less stress, better results
- Learn safer, more economical driving and enjoy it more!



AUSTRALIAN DRIVER  
TRAINERS ASSOCIATION

Your choice of an ADTA Instructor assures professional, up-to-date and ethical tuition.

To view our Code of Practice and list of accredited instructors, visit [www.adtatas.com](http://www.adtatas.com)