

INTERMEDIATE POST TO BE LOCATED CENTRALLY

A = L/6 FOR 2 POSTS  
A = L/8 FOR 3 POSTS

\* WHERE SIGN IS BACKED BY 3, 5 OR 7 STIFFENING CHANNELS, RAISE WELDED LUG BY 50

STIFFENING CHANNELS

GALVANIZED PIPE CAP

PIPE CLAMPS

GALVANIZED PIPE POST & BRACE

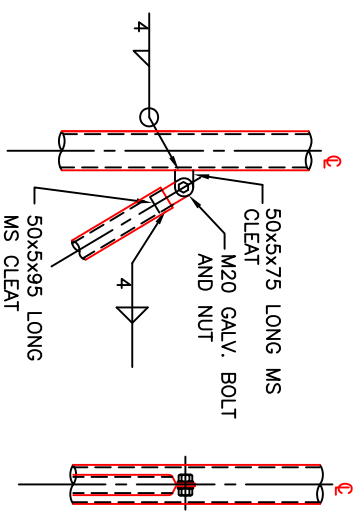
WELDED LUG (SEE DETAIL)

PIPE CLAMPS

REFER DRAWINGS 3403-9/P26 & P27

LEVEL OF CARRIAGE WAY

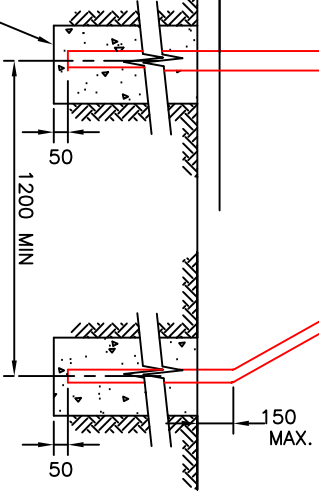
MASS CONCRETE FOOTINGS



ALL WELDS TO BE PAINTED COLD GALV.

**WELDED LUG DETAIL**

**NOTE:**  
IF BASE OF SIGN IS HIGHER THAN 2m ABOVE GROUND LEVEL, ITS STABILIZATION SHALL BE CHECKED.



2	NOTE REFERRING TO SPECIFICATION FOR SIZE & No. OF POSTS REMOVED	21/5/02	GKR	DRAFTING	DESIGN	DEPARTMENT OF INFRASTRUCTURE, ENERGY AND RESOURCES, TASMANIA
3	DELETION OF UNISTRUT DATA	TRB 3/9/99	GKR	W. WHEHN 11/82		MOUNTING AND INSTALLATION DETAILS TRAFFIC SIGNS - BRACED
4	REPOSITION UNISTRUT, WELDED LUG AND POST CAP	9/8/84		D. BURBRIDGE 18/11/82	E. BRADFORD 23/12/82	
5	DELETION OF REFERENCE TO UNISTRUT No	20/11/83		DATE APPROVED	P. WHARMBY 5/83	
AMENDMENTS		CHECKED	DATE	APPROVED	DATE	
No.						DRG. No. 3403-9/P23-4