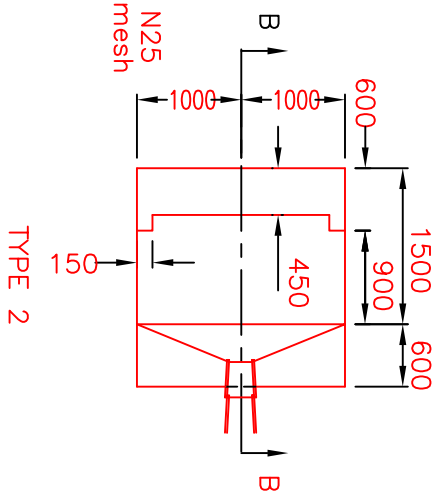


Note
 Concrete to be 150 thick N25
 Reinforcement to be F81 mesh
 placed centrally.

NOT TO SCALE



DRAFTING		DESIGN		DEPARTMENT OF INFRASTRUCTURE, ENERGY AND RESOURCES, TASMANIA	
DRWN	P.J.M.	DATE DESIGNED	8/93	R.R.W.	8/93
CHEKED	D. PEARCE	DATE RECOMMENDED/CHEKED	31/8/93	R. JENNI	31/8/93
APPROVED	D. PEARCE	DATE ACCEPTED	31/8/93	W. SCHOE	1/9/93
CONCRETE lip amended					
Rock apron added - Type 1					
AMENDMENTS					
No.					

SPLASH APRON TYPE 1 & 2
 FOR BATTER DRAIN

FROM LINK No. / DISTANCE	TO LINK No. / DISTANCE
CONTRACT No.	SHEET No.
DRG. No.	3402-2/P32-2